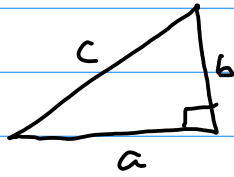


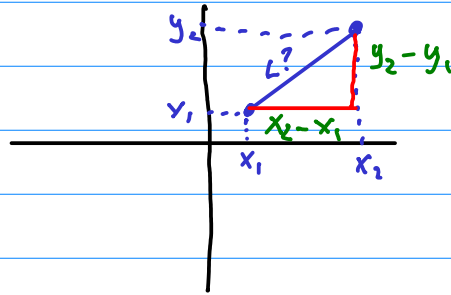
Distance Formula

Pythagorean Theorem:



$$c = \sqrt{a^2 + b^2}$$

Distance between (x_1, y_1) and (x_2, y_2) ?



$$L = \sqrt{(x_2 - x_1)^2 + (y_2 - y_1)^2}$$

eg Distance between $(-2, 1)$ and $(1, -3)$

$$L = \sqrt{(1 - (-2))^2 + (-3 - 1)^2} = \sqrt{25} = \boxed{5}$$